



**Flanged gate valves, designed according to EN1074 part 1 & 2
Face to face according to EN 558 table 2 basic series 3
Flanges and drilling to EN1092-2 (ISO 7005-2)**

Use:

For water to max. 70°C

Tests:

Hydraulic test according to EN1074-1 and 2/EN12266

Seat: 1.1 x PN

Body: 1.5 x PN

Operating torque test

Marking:

DN, PN, casting no. and body material.

Materials

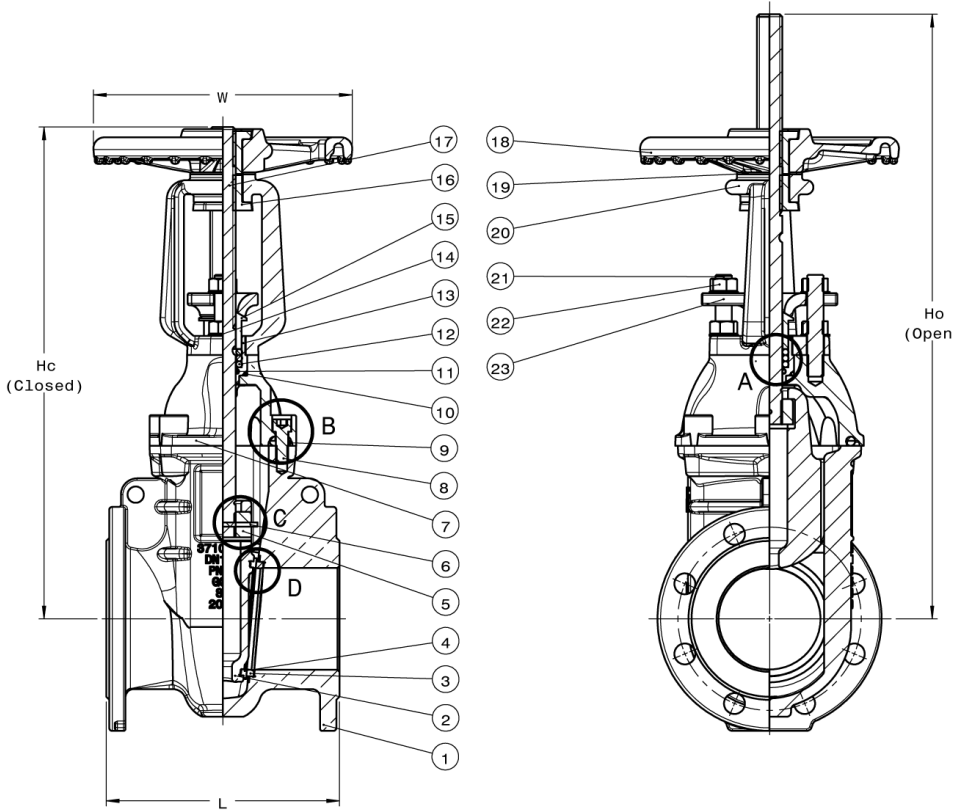
Body	Ductile Iron
Bonnet	Ductile Iron
Wedge	Ductile Iron
Seats/Faces	Gunmetal
Wedge Nut	Aluminium bronze
Stem	Stainless Steel
Bushing	Nylon
O-rings	EPDM
Gasket	EPDM
Coating	Epoxy coating RAL7011



Flanged gate valves, designed according to EN1074 part 1 & 2
Face to face according to EN 558 table 2 basic series 3
Flanges and drilling to EN1092-2 (ISO 7005-2)

Component list

- | | | | | |
|---------------------|------------------|---------------|---------------|--------------------|
| 1. Body | 6. Pin | 11. O-ring | 16. Stem Nut | 21. Stud bolt |
| 2. Wedge | 7. Bonnet | 12. Stem Seal | 17. Stem | 22. Nut |
| 3. Seat Facing Ring | 8. Bolt | 13. Bushing | 18. Handwheel | 23. Gland follower |
| 4. Seat Ring | 9. Bonnet Gasket | 14. Washer | 19. Washer | |
| 5. Wedge Nut | 10. O-ring | 15. Gland | 20. Yoke | |



A. Stem sealing

O-ring stem sealing comprising of 4 O-rings to ensure optimum sealing through stem.

B. Body/bonnet connection

The unique assembly of the valve body and bonnet ensures a durable tightness:
 A round rubber bonnet gasket fits into a recess in the valve bonnet preventing it from being blown out by pressure surges.

C. Wedge nut

The wedge nut is made of dezincification resistant brass with lubricating abilities providing optimum compatibility with the stainless steel stem. The wedge nut is secured by means of stainless steel pin to the rising stem.

D. Wedge

The wedge is made from ductile iron with bronze face rings which are machined to a fine surface finish to ensure optimum contact seal with body seat rings.
 The wedge face rings are accurately machined and firmly secured to the wedge. The guides in the wedge ensure uniform closure regardless of high pressures. The wedge has a large through bore housing for the stem that ensures no stagnant water or impurities can collect. The wedge is fully protected by a coating of fusion bonded epoxy.

Ref.no.	DN	L mm	Hc mm	W mm	Ho mm	Weight Kgs
37-050-46-61013110	50	178	370	180	457	29
37-080-46-61013110	80	180	415	180	528	34
37-100-46-61013110	100	229	481	254	620	41
37-150-46-61013110	150	267	632	305	813	69
37-200-46-61013110	200	292	792	356	1025	111
37-250-46-61013110	250	330	936	432	1218	171
37-300-46-61013110	300	356	1064	432	1398	252

