



**Flanged gate valves, designed according to EN1074 part 1 & 2
Face to face according to EN 558 table 2 basic series 3
Flanges and drilling to EN1092-2 (ISO 7005-2)**

Use:

For water to max. 70°C

Tests:

Hydraulic test according to EN1074-1 and 2/EN12266

Seat: 1.1 x PN

Body: 1.5 x PN

Operating torque test

Optional extras:

Hand wheel, worm gear and electric actuator.

Marking:

DN, PN, casting no. and body material.

Materials

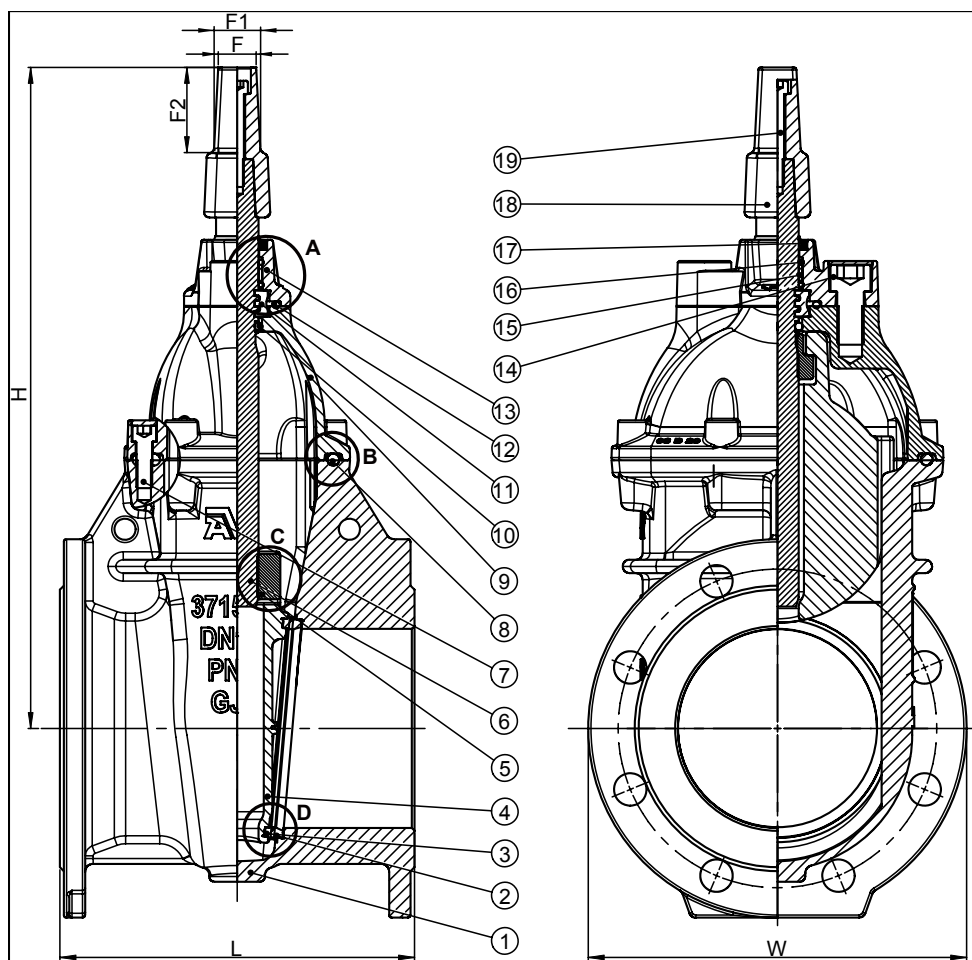
Body	Ductile Iron
Bonnet	Ductile Iron
Wedge	Ductile Iron
Seats/Faces	Gunmetal
Wedge Nut	Aluminium bronze
Stem	Stainless Steel
Bushing	Nylon
O-rings	EPDM
Gasket	EPDM
Fasteners	Zinc plated mild steel
Stemcap	Grey iron
Coating	Epoxy coating RAL7011



Flanged gate valves, designed according to EN1074 part 1 & 2
Face to face according to EN 558 table 2 basic series 3
Flanges and drilling to EN1092-2 (ISO 7005-2)

Component list

- | | | | |
|--------------|---------------------|----------------------|----------------|
| 1. Body | 6. Stem | 11. Thrust collar | 16. O-ring |
| 2. Seat ring | 7. Socket head bolt | 12. O-ring | 17. Wiper ring |
| 3. Face ring | 8. Bonnet gasket | 13. Gland | 18. Stemcap |
| 4. Wedge | 9. Bonnet | 14. Socket head bolt | 19. Bolt |
| 5. Wedge nut | 10. O-ring | 15. Bushing | |



Ref.no.	DN	L mm	H mm	W mm	F mm	F1 mm	F2 mm	Weight Kgs
37-050-50-210001	50	178	304	165	28	35	63	11
37-065-50-210001	65	190	330	185	28	35	63	13
37-080-50-210001	80	203	349	200	28	35	63	21
37-100-50-210001	100	229	381	220	28	35	63	27
37-125-50-210001	125	254	462	250	28	35	63	38
37-150-50-210001	150	267	498	285	28	35	63	43
37-200-50-210001	200	292	597	340	28	35	63	76
37-250-50-210001	250	330	672	405	28	35	63	105
37-300-50-210001	300	356	753	460	28	35	63	159

