



**Designed according to EN 1074-5
Face to face according to EN 558 table 2 basic series 1
Standard flange drilling to EN 1092-2 (ISO 7005-2)**

Use:
For water, to max. 70°C

Test:
Hydraulic test to EN 12266
Seat: 1.1 x PN
Body: 1.5 x PN
Test of duty point, if specified (Optional).
Materials used, approved to WRAS.

Marking:
DN, PN, casting no. and body material.

Materials	
Body	Ductile iron
Bonnet	Ductile iron
Diaphragm	EPDM
Stem	Stainless steel AISI 316
Stem Guide	Stainless steel AISI 316
Spring	Stainless steel AISI 316
Disc Seal	EPDM
Seat	Stainless steel AISI 316
O-ring	EPDM
Hex	Grade-A4

Accessories:
Manometers, position indicator, anti-cavitation system, different SFM's or MFM's according to application.

Glenfield diaphragm operated control valve, PRV type, automatically reduces a higher upstream pressure to a lower downstream pressure. The downstream pressure is kept constant, regardless of changes in flow rate or upstream pressure. The main control valve is pilot operated, capable of precise setting and easy adjustment of downstream pressure.

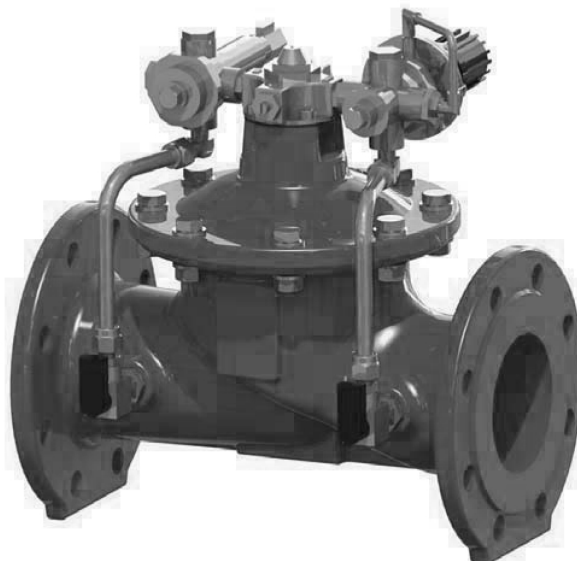
Features:

Main control valve

- Lifted seat, to avoid damage due to cavitation; High Kv value, at fully open position.
- Geometry of regulating disc, provides high ratio of travel- Kv, resulting in optimal control performance.
- Non symmetric axial position of rubber diaphragm, getting less stretch/stress, near closed position.
- All, non coated internals, made of AISI316.
- Body and bonnet of ductile iron with fusion bonded epoxy, 300 micron, RAL 7011, according to WRAS-DVGW/W270/UBA.

Pilot system

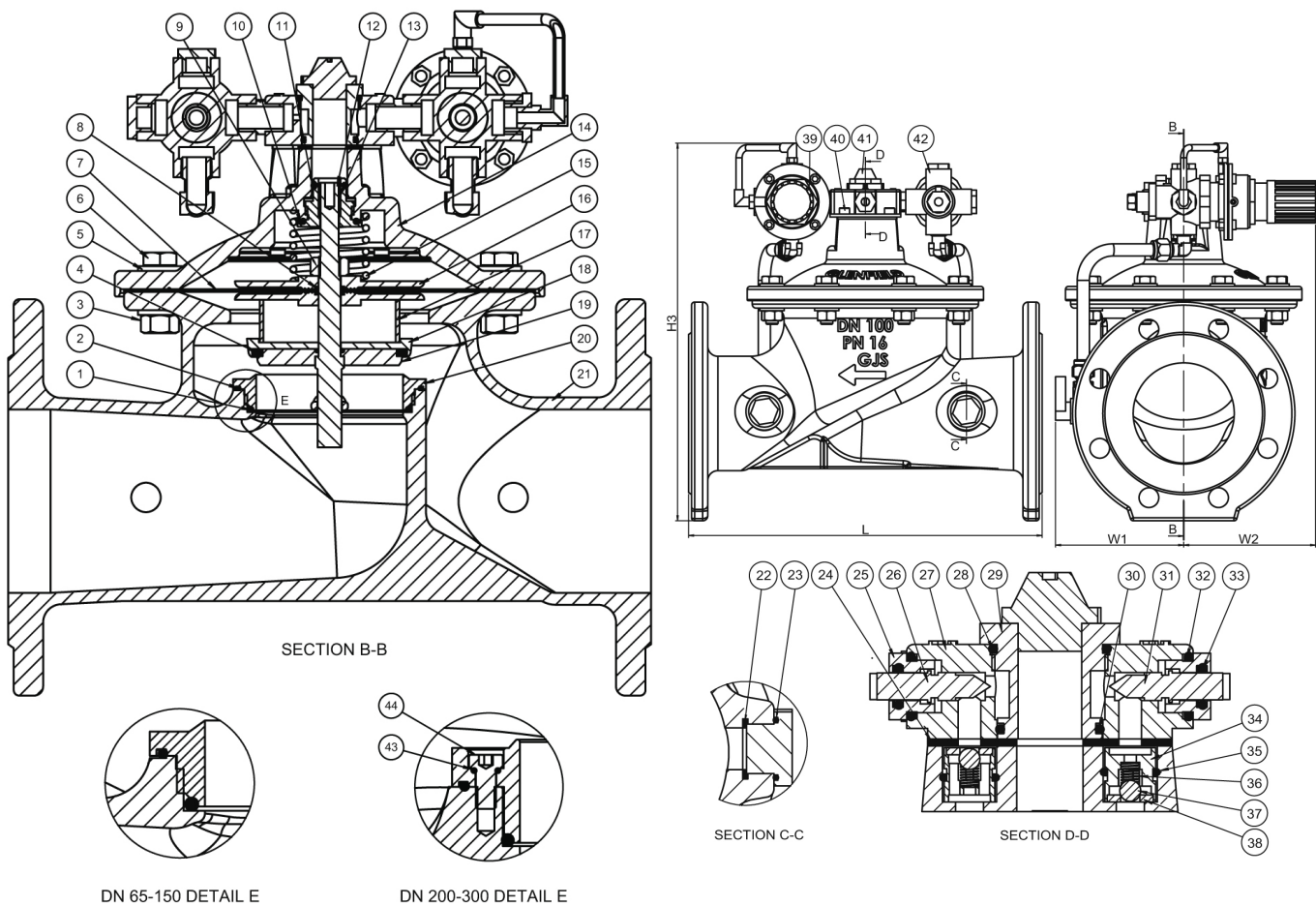
- Modular and compact design, easy for application change.
- Main components: Distribution block, filter and hydraulic control block.
 - Distribution block, AISI 316.
 - Connecting main control valve to pilot system.
 - Includes control of opening and closing speed of main valve.
 - Control orifice.
 - Filter, AISI 316.
 - High capacity, long life, easy to flush, back flushing possible.
 - Mesh 100, high performance wire screen type.
 - Hydraulic control block, AISI 316.
 - Includes balanced pilot valve, providing more stable pressure set.
 - Can be set up for different applications, using specific: Single Function Modules (type SFM) or Multi Function Modules (type MFM).



Designed according to EN 1074-5
Face to face according to EN 558 table 2 basic series 1
Standard flange drilling to EN 1092-2 (ISO 7005-2)

Component list

1. O-Ring	10. O-Ring	19. Regulating Plug	28. O-Ring	37. Ball
2. O-Ring	11. O-Ring	20. Seat	29. Insert	38. Seat
3. Hex Nut	12. Stem	21. Body	30. O-Ring	39. Pilot valve
4. Disc Seal	13. Stem Guide	22. Flat Seal	31. Needle for opening	40. Bolt
5. Washer	14. Bonnet	23. O-Ring	32. O-Ring	41. Mechanical air-vent
6. Hex Bolt	15. Spring	24. Gasket	33. O-Ring	42. Filter
7. Diaphragm	16. Diaphragm Support	25. Bushing	34. Body	43. O-Ring
8. O-Ring	17. Distance Pipe	26. Needle for closing	35. O-Ring	44. Machined Bolt
9. Hex Nut	18. Disc Retainer	27. Body	36. Spring	



Designed according to EN 1074-5
Face to face according to EN 558 table 2 basic series 1
Standard flange drilling to EN 1092-2 (ISO 7005-2)

Ref.no.	DN	L mm	W1 mm	W2 mm	H3 mm	Pilot range		Weight Kg
						bar		
						PN10	PN16	
859-0065-00-1140000	65	290	104	131	335	0.6-6		17
859-0065-00-1140001	65	290	104	131	335	5-11		17
859-0065-00-1140002	65	290	104	131	335	10-16		17
859-0065-00-1140003	65	290	104	131	335	0.1-1		17
859-0080-00-1140000	80	310	117	131	354	0.6-6		20.8
859-0080-00-1140001	80	310	117	131	354	5-11		20.8
859-0080-00-1140002	80	310	117	131	354	10-16		20.8
859-0080-00-1140003	80	310	117	131	354	0.1-1		20.8
859-0100-00-1140000	100	350	127	131	373	0.6-6		25.6
859-0100-00-1140001	100	350	127	131	373	5-11		25.6
859-0100-00-1140002	100	350	127	131	373	10-16		25.6
859-0100-00-1140003	100	350	127	131	373	0.1-1		25.6
859-0125-00-1140000	125	400	127	131	392	0.6-6		30.8
859-0125-00-1140001	125	400	127	131	392	5-11		30.8
859-0125-00-1140002	125	400	127	131	392	10-16		30.8
859-0125-00-1140003	125	400	127	131	392	0.1-1		30.8
859-0150-00-1140000	150	480	157	139	430	0.6-6		72.6
859-0150-00-1140001	150	480	157	139	430	5-11		72.6
859-0150-00-1140002	150	480	157	139	430	10-16		72.6
859-0150-00-1140003	150	480	157	139	430	0.1-1		72.6
859-0200-00-X140000	200	600	202	202	521	0.6-6		86.9
859-0200-00-X140001	200	600	202	202	521	5-10	5-11	86.9
859-0200-00-X140002	200	600	202	202	521	-	10-16	86.9
859-0200-00-X140003	200	600	202	202	521	0.1-1		86.9
859-0250-00-X140000	250	730	252	252	638	0.6-6		143.5
859-0250-00-X140001	250	730	252	252	638	5-10	5-11	143.5
859-0250-00-X140002	250	730	252	252	638	-	10-16	143.5
859-0250-00-X140003	250	730	252	252	638	0.1-1		143.5
859-0300-00-X140000	300	850	275	275	715	0.6-6		203.0
859-0300-00-X140001	300	850	275	275	715	5-10	5-11	203.0
859-0300-00-X140002	300	850	275	275	715	-	10-16	203.0
859-0300-00-X140003	300	850	275	275	715	0.1-1		203.0

X=0, PN10
X=1, PN16