



ICV SILENT CHECK VALVE, PN16, FLANGED

903/00

DN65-400, epoxy coated, ductile iron, metal seated

002

Series 903 metal seated silent check valves are designed to prevent back flow in high temperature range pumping applications. The valve element movement is controlled via a central guide where a centrally mounted spring together with the short movement aids the quick closing that is essential in reducing shock associated with valve closure. The pumped media can be water, glycol or other clean, neutral liquids.

Product Description:

Flanged silent check valve for water, and water with glycol from -10° C to 110° C

Standards:

- Designed according to EN 12334
- Face to face according to MSS SP-125 short globe
- Standard flange drilling to EN1092-2 (ISO 7005-2), PN 16

Test/Approvals:

- Experimental shell design strength according to EN12516-3
- Test according to EN12266

Features:

- The combination of light disc, short stroke distance and fast closing spring design is effectively mitigating slamming
- Streamlined contour for low head loss
- The special seat design ensures quick and easy trim replacement
- Fusion bonded epoxy coating on both external and internal surfaces
- Metal seat for durability and high temperature tolerance
- Up to and including DN200, the design makes it possible to mount a butterfly valve at the outlet side of the silent check valve, without any additional adapters. This refers to the measure reference C

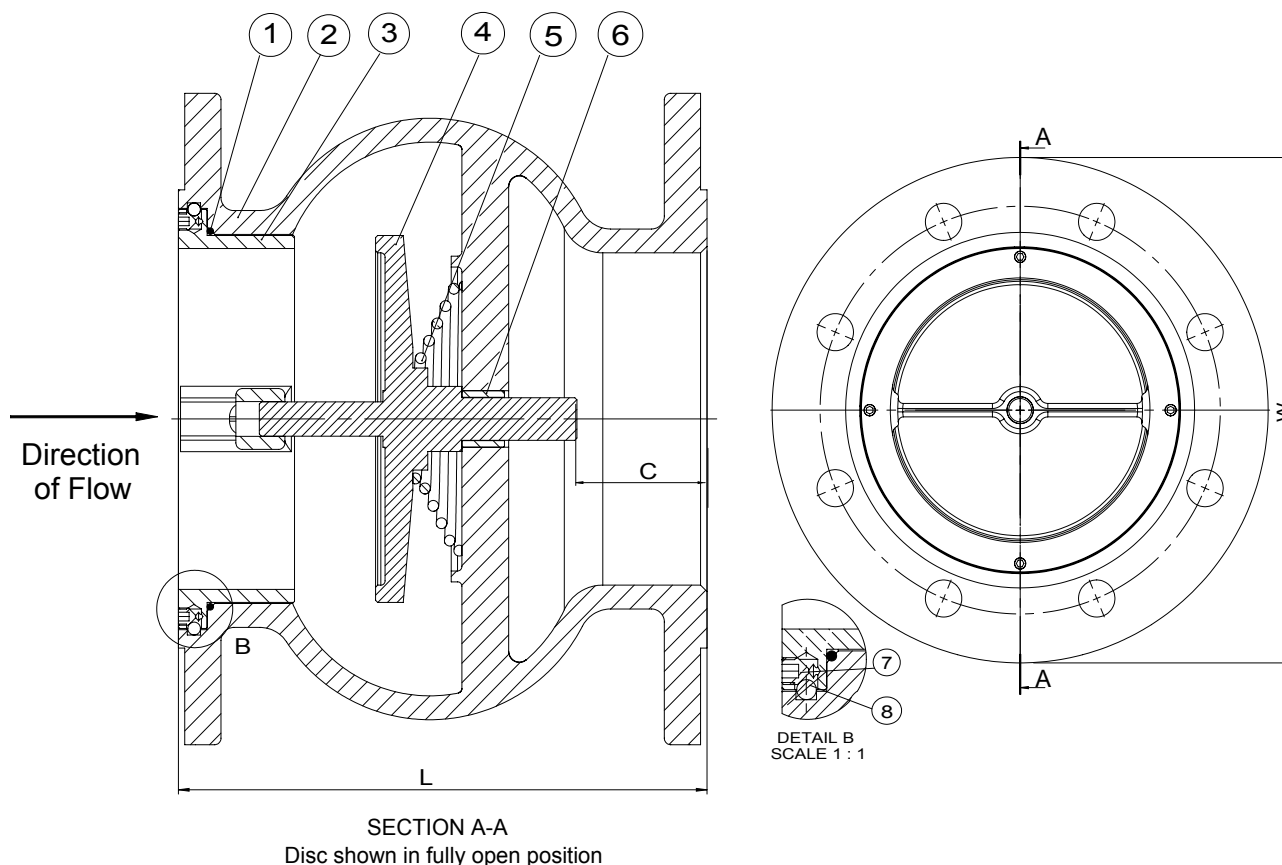


ICV SILENT CHECK VALVE, PN16, FLANGED

DN65-400, epoxy coated, ductile iron, metal seated

903/00

002



Component List:

| | | | |
|--------------|------------------------|-------------------|---------------------------|
| 1. O-ring | EPDM | 2. Body | Ductile Iron EN-GJS-500-7 |
| 3. Seat | Stainless steel 1.4308 | 4. Disc | Stainless steel 1.4308 |
| 5. Spring | Stainless steel 1.4301 | 6. Bush | Stainless steel AISI 316 |
| 7. Set Screw | Stainless steel A2 | 8. Retaining Ball | Stainless steel AISI 304 |

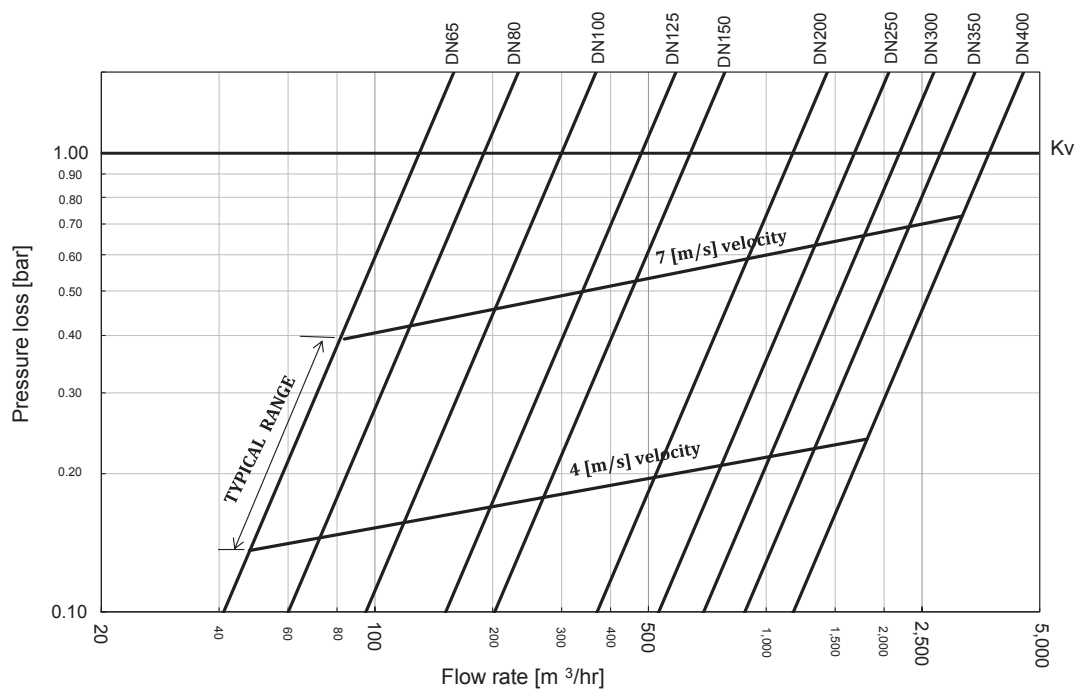
Components may be substituted with equivalent or higher class materials without prior notification.

Reference Nos. and Dimensions:

| AVK ref. nos | DN mm | Flange drilling | L mm | W mm | C mm | Kvs* m³/h | Theoretic. weight kg |
|---------------------------------|----------|--------------------|---------|---------|---------|--------------|----------------------------|
| 903-065-00-11036 ⁽¹⁾ | 65 | PN16 | 140 | 185 | 27.5 | 130 | 8.0 |
| 903-080-00-11036 ⁽¹⁾ | 80 | PN16 | 152 | 200 | 35.5 | 190 | 9.0 |
| 903-100-00-11036 ⁽¹⁾ | 100 | PN16 | 184 | 235 | 46 | 300 | 15 |
| 903-125-00-11036 ⁽¹⁾ | 125 | PN16 | 216 | 270 | 51 | 480 | 21 |
| 903-150-00-11036 ⁽¹⁾ | 150 | PN16 | 248 | 300 | 61 | 640 | 32 |
| 903-200-00-11036 ⁽¹⁾ | 200 | PN16 | 317 | 360 | 84 | 1170 | 52 |
| 903-250-00-11036 ⁽¹⁾ | 250 | PN16 | 394 | 440 | 118 | 1680 | 85 |
| 903-300-00-11036 ⁽¹⁾ | 300 | PN16 | 362 | 500 | 16 | 2190 | 111 |
| 903-350-00-11036 ⁽¹⁾ | 350 | PN16 | 400 | 580 | 35.5 | 2790 | 158 |
| 903-400-00-11036 ⁽¹⁾ | 400 | PN16 | 448 | 635 | 50 | 3710 | 208 |

⁽¹⁾ * Fully open position m³/h @ 1 bar differential pressure

Flow/Pressure Drop Chart - Silent Check Valve (Water)



These charts are based on the flow of clean water at ambient temperature 20° C.