



## Rubber expansion joint single sphere 911/01 PN16/25

Flanges and drilling to BS EN 1092-2

**Use:**

For water to max. 90°C

**Tests:**

Hydraulic test to BS EN 12266

Body: 1.5 x PN (Include the control rod)

1.0 x PN ( Not include the control rod)

**Marking:**

Body: ICV Stickers. DN, PN, body material.

**Materials**

Flange	Galvanized forged carbon steel
Reinforcement	Nylon tire cord
Body	EPDM
Control rod*	Galvanized carbon steel
Wire	Galvanized carbon steel

\*PN16 DN50-250 Available on request  
DN300-600 Working pressure over 10Bar,  
control rod must be installed  
PN25 Control rod must be installed



Expect... **AVR**

The designs, materials and specifications shown are subject to change without notice due to our continuing programme of product development.

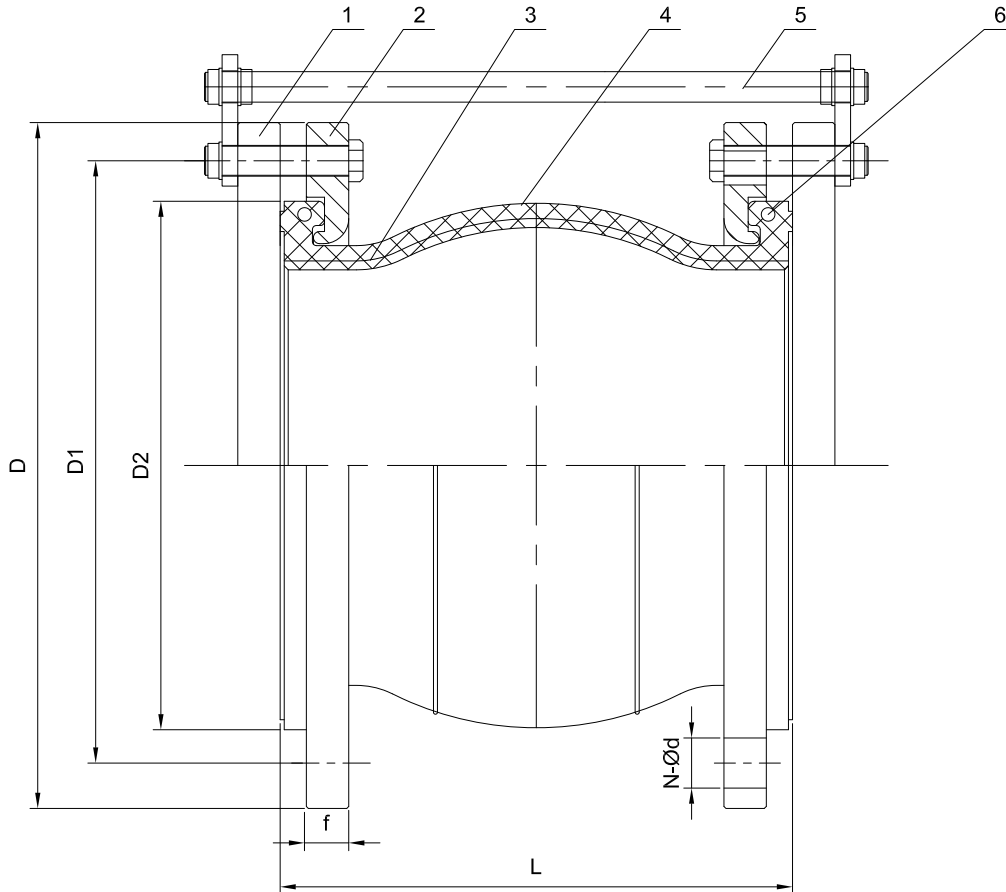
A Member of the AVR Group

DS91101170902

Flanges and drilling to BS EN 1092-2

Component list

- 1. Pipe flange
- 2. Rubber expansion joint flange
- 3. Reinforcement
- 4. Body
- 5. Control rod
- 6. Wire



Ref.no.	L*		D		D1		D2		Control rod number	Axial compression		Axial elongation		Transverse deflection		Angular deflection		N-Ød		f		Weight Kgs
	DN	mm	mm	mm	mm	mm	mm	mm		mm	mm	mm	mm	mm	mm	mm	mm	mm	mm	mm	mm	
			PN16	PN25	PN16	PN25				PN16	PN25	PN16	PN25	PN16	PN25	PN16	PN25	PN16	PN25	PN16	PN25	
911010050X0YY	50	105	165	125	86	2	8	6	3	8	4	15°	8°	4-Ø18	4-Ø18	17	18	4.1				
911010065X0YY	65	115	185	145	106	2	12	6	3	10	5	15°	8°	4-Ø18	8-Ø18	17	20	5.2				
911010080X0YY	80	130	200	160	118	2	12	10	5	10	5	15°	8°	8-Ø18	8-Ø18	19	22	6.5				
911010100X0YY	100	135	220	235	180	190	152	2	18	10	5	12	6	15°	8°	8-Ø18	8-Ø22	19	22	7.3		
911010125X0YY	125	150	250	270	210	220	182	2	18	16	9	5	±15	6.5	15°	8°	8-Ø18	8-Ø26	21	24	9.7	
911010150X0YY	150	150	285	300	240	250	213	2	18	16	9	5	±15	6.5	15°	8°	8-Ø22	8-Ø26	21	24	12.6	
911010200X0YY	200	150	340	360	295	310	262	3	18	16	9	5	±15	6.5	15°	8°	12-Ø22	12-Ø26	23	26	17.7	
911010250X0YY	250	200	405	425	355	370	323	3	20	15	6.5	±20	10	15°	8°	12-Ø26	12-Ø30	25	28	25		
911010300X0YY	300	200	460	485	410	430	372	4	20	15	6.5	±20	10	15°	8°	12-Ø26	16-Ø30	25	28	31.5		
911010350X0YY	350	200	520	555	470	490	410	4	20	15	6.5	±20	10	15°	8°	16-Ø26	16-Ø33	27	30	46.5		
911010400X0YY	400	200	580	620	525	550	473	4	20	15	6.5	±20	10	15°	8°	16-Ø30	16-Ø36	29	34	59.4		
911010450X0YY	450	200	640	670	585	600	522	4	20	15	6.5	±20	10	15°	8°	20-Ø30	20-Ø36	31	34	69.4		
911010500X0YY	500	200	715	730	650	660	570	4	20	15	6.5	±20	10	15°	8°	20-Ø33	20-Ø36	31	34	103.7		
911010600X0YY	600	250	840	845	770	770	690	4	20	15	6.5	±20	10	15°	8°	20-Ø36	20-Ø39	31	34	134.7		

X=1, PN16; X=3, PN25  
 YY=00, standard (without control rod)  
 YY=01, with control rod  
 \*Installation length should according to product structure length, Deviation≤3mm.

