



Thread to BS 21

Use:

For water to max. 90°C

Tests:

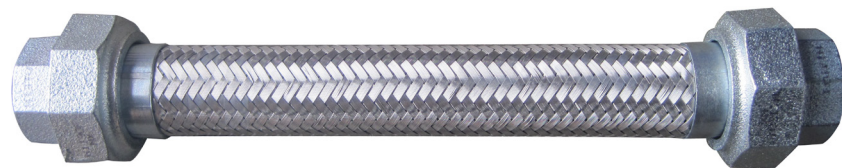
Hydraulic test to BS EN 12266
Body: 1.5 x PN

Marking:

Body: ICV Stickers. DN, PN and body material.

Materials

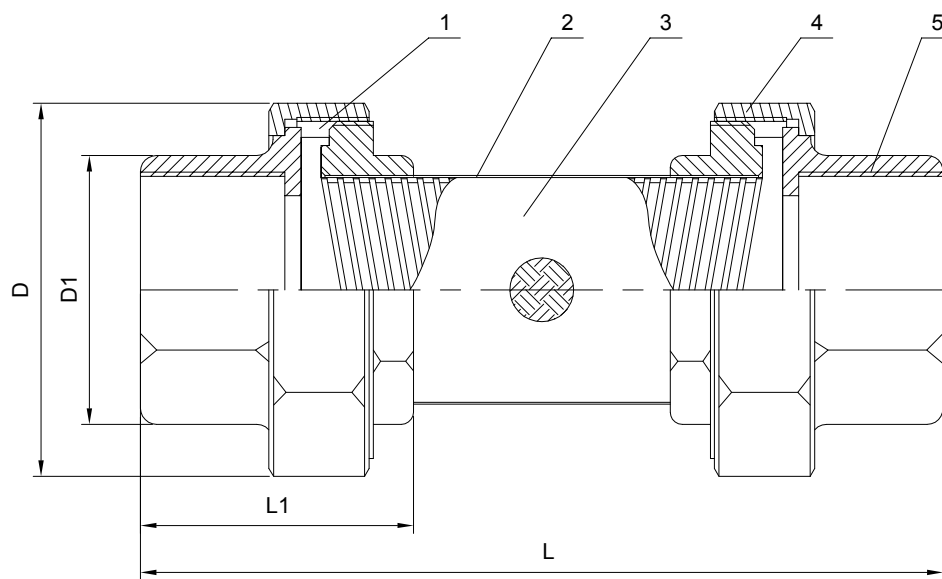
Separation ring	Stainless steel AISI 304
Braid	Stainless steel AISI 304/316
Liner	Stainless steel AISI 304
Male union Joint	Carbon steel
	Stainless steel AISI 304/316
Female union Joint	Carbon steel
	Stainless steel AISI 304/316



Thread to BS 21

Component list

- | | | |
|--------------------|---------------------|-----------------------|
| 1. Separation ring | 3. Liner | 5. Female union Joint |
| 2. Braid | 4. Male union Joint | |



Ref.no.	DN	L mm	L1 mm	D mm	D1 mm	Weight Kgs
911050015X001YYY	15	300	45	45	27	0.7
911050020X001YYY	20	300	48	48	32	0.8
911050025X001YYY	25	300	54	60	41	1.3
911050032X001YYY	32	300	56	69	50	1.8
911050040X001YYY	40	300	65	79	55	2
911050050X001YYY	50	300	67	90	69	2.7

X=1, PN16
X=3, PN25
YYY=Different structure length
YYY=000, standard (in the table above)
YYY=Other data, non standard type

