



**Flanges and drilling to BS EN 1092-2**

**Use:**

For water to max. 90°C

**Tests:**

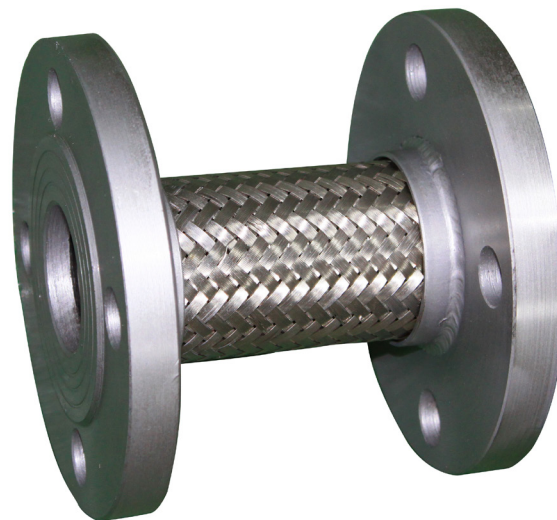
Hydraulic test to BS EN 12266  
Body: 1.5 x PN

**Marking:**

Body: ICV Stickers. DN, PN and body material.

**Materials**

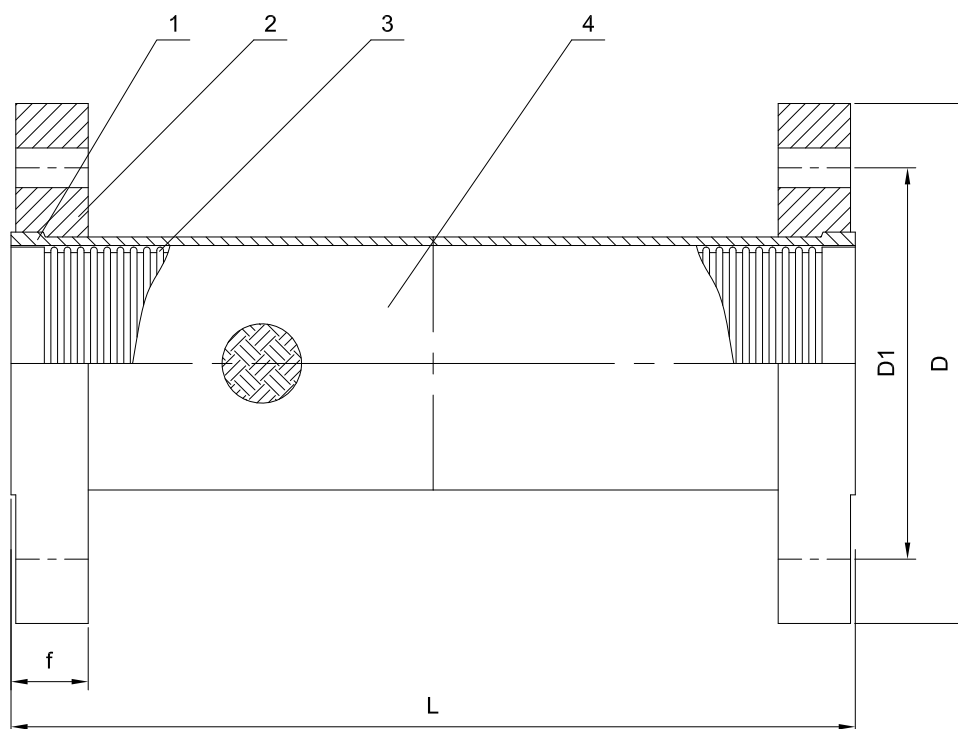
Locating ring	Stainless steel AISI 304
Flange	Carbon steel WCB
Braid	Stainless steel AISI 304
Liner	Stainless steel AISI 304



Flanges and drilling to BS EN 1092-2

Component list

- 1. Locating ring
- 2. Flange
- 3. Braid
- 4. Liner



Ref.no.	DN	L mm	D mm		D1 mm		f mm		Wight Kgs	
			PN16	PN25	PN16	PN25	PN16	PN25	PN16	PN25
911060032X001YYYY	32	300	140	140	100	100	18	20	4.8	6
911060040X001YYYY	40	300	150	150	110	110	20	22	6	7
911060050X001YYYY	50	300	165	165	125	125	22	24	7	8
911060065X001YYYY	65	300	185	185	145	145	24	24	8	8.5
911060080X001YYYY	80	300	200	200	160	160	24	26	9	11
911060100X001YYYY	100	300	220	235	180	190	26	28	12	15.5
911060125X001YYYY	125	300	250	300	210	250	28	30	15	22
911060150X001YYYY	150	300	285	360	240	310	28	30	21	27.5
911060200X001YYYY	200	300	340	395	295	340	30	32	27	36.5
911060250X001YYYY	250	300	405	425	355	370	32	34	37	55
911060300X001YYYY	300	300	460	485	410	430	32	36	53	74
911060350X001YYYY	350	500	520	555	470	490	34	42	90	127
911060400X001YYYY	400	500	580	620	525	550	38	44	110	161
911060450X001YYYY	450	500	640	670	585	600	42	48	140	190
911060500X001YYYY	500	500	715	730	650	660	48	52	224	287
911060600X001YYYY	600	500	840	845	770	770	50	56	295	410
911060700X001YYYY	700	900	910	960	850	875	50	60	330	450
911060800X001YYYY	800	1000	1025	1085	950	990	52	64	380	480

X=1, PN16  
X=3, PN25  
YYYY=Different structure length  
YYYY=0000, standard (in the table above)  
YYYY=Other data, non standard type

