



Flanges and drilling to BS EN 1092-2

Use:

For water to max. 90°C

Tests:

Hydraulic test to BS EN 12266

Body: 1.5 x PN

Marking:

Body: ICV Stickers. DN, PN and body material.

Materials

Flange*

Galvanized steel

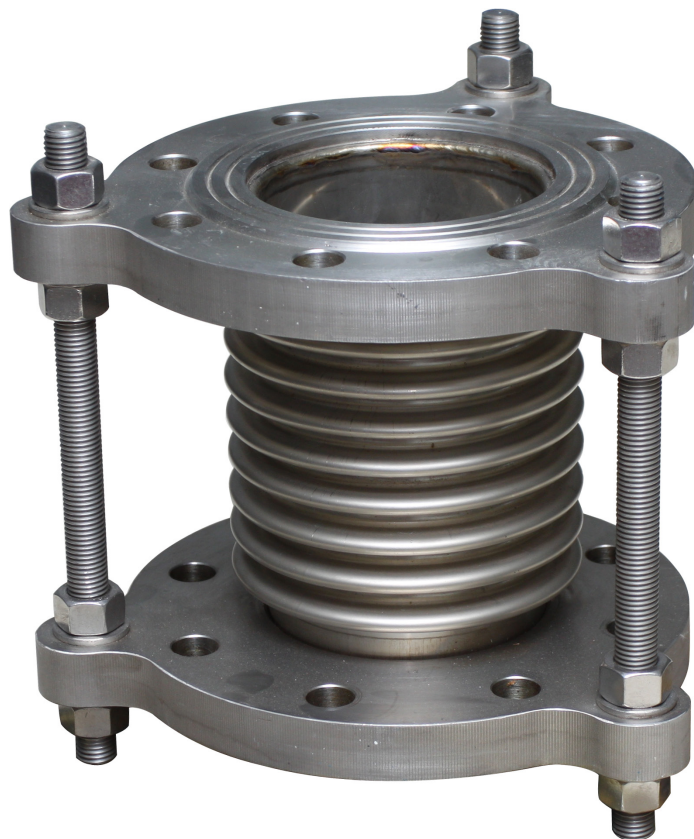
Body*

Stainless steel AISI 304

Bolt

Carbon steel WCB

*Other materials are available



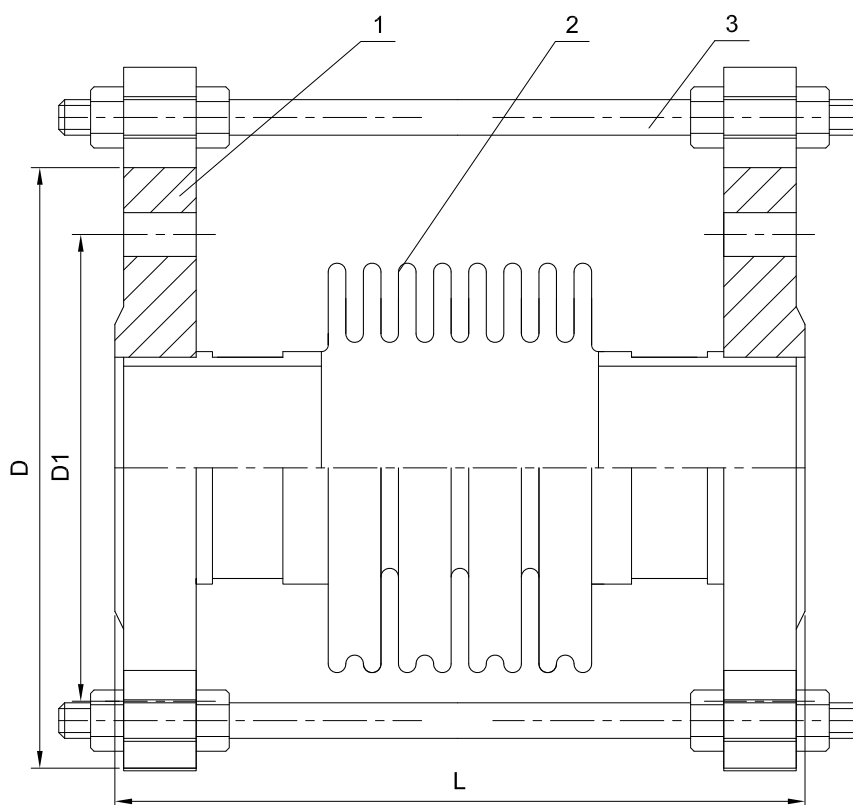
Flanges and drilling to BS EN 1092-2

Component list

1. Flange

2. Body

3. Bolt



Ref.no.	DN	L		D		D1		f		Axial movement		Bellows	Axial spring rate		Weight	
		mm	mm	mm	mm	mm	mm	mm	mm	mm	mm		N/mm	N/mm	Kgs	Kgs
911080032X000YYZZZ	32	250	140	140	100	100	18	20	±10	±8	12	204	312	4	6	
911080040X000YYZZZ	40	250	150	150	110	110	20	22	±10	±8	12	204	312	6	9	
911080050X000YYZZZ	50	250	165	165	125	125	22	24	±10	±8	12	204	312	8	10	
911080065X000YYZZZ	65	250	185	185	145	145	24	24	±12	±8	12	210	350	11	11	
911080080X000YYZZZ	80	250	200	200	160	160	24	26	±12	±10	12	264	405	13	15	
911080100X000YYZZZ	100	250	220	235	180	190	26	28	±15	±10	12	296	472	16	18	
911080125X000YYZZZ	125	300	250	270	210	220	28	30	±20	±15	10	310	495	24	35	
911080150X000YYZZZ	150	300	285	300	240	250	28	30	±20	±15	10	347	590	29	35	
911080200X000YYZZZ	200	300	340	360	295	310	30	32	±20	±15	10	510	674	37	58	
911080250X000YYZZZ	250	300	405	425	355	370	32	34	±25	±20	10	542	848	62	78	
911080300X000YYZZZ	300	300	460	485	410	430	32	36	±28	±20	10	599	1029	74	105	
911080350X000YYZZZ	350	400	520	555	470	490	34	42	±28	±25	8	724	1225	93	136	
911080400X000YYZZZ	400	400	580	620	525	550	38	44	±30	±25	8	871	1495	136	180	
911080450X000YYZZZ	450	400	640	670	585	600	42	48	±30	±25	8	945	1558	139	195	
911080500X000YYZZZ	500	500	715	730	650	660	48	52	±30	±28	8	995	1862	191	407	
911080600X000YYZZZ	600	500	840	845	770	770	50	56	±30	±28	8	1691	2163	272	422	
911080700X000YYZZZ	700	500	910	960	850	875	50	60	±30	±28	8	1967	3559	349	465	
911080800X000YYZZZ	800	700	1025	1085	950	990	52	64	±35	±30	4	2142	4736	470	809	
911080900X000YYZZZ	900	700	1125	1185	1050	1090	44	58	±35	±30	4	2335	5159	523	951	
911081000X000YYZZZ	1000	700	1255	1320	1170	1210	46	58	±35	±30	4	2755	5028	601	1063	
911081100X000YYZZZ	1100	750	1355	-	1270	-	50	-	±38	-	4	4473	-	661	-	
911081200X000YYZZZ	1200	750	1485	-	1390	-	52	-	±38	-	4	4956	-	750	-	

X=1, PN16; X=3, PN25
 YY, Bellows; ZZZ, face to face

