



Electric ball valve PN16 (Flanged end)

920/02
002

**On/Off or modulating control DN65-80 available
Flanges and drilling to BS EN 1092-2**

Use:

For water to max. 95°C

Tests:

Hydraulic test to BS EN 12266

Seat: According to each aperture
closure pressure difference.

Body: 1.5 x PN

Marking:

Body: DN, PN, flow direction.

Actuator: ICV logo, wiring diagram,
voltage value.

Materials

Body	Cast iron
Seat	PTFE
Ball	Chrome plated Brass CW617N
Stem	Stainless steel AISI 304
Gasket	PTFE
O-ring	EPDM
Actuator housing	ABS

Technical data

Voltage	220V(On/Off) 24V(Modulating control)
Power	2W
Control signal	0-10V/2-10V/0-20mA/4-20mA
Feedback signal	0-10V/2-10V
Operating time	95-105s
Operating torque	10Nm
Ambient temp	5-50°C
Protection class	IP54



Expect... **AVR**

The designs, materials and specifications shown are subject to change without notice due to our continuing programme of product development.

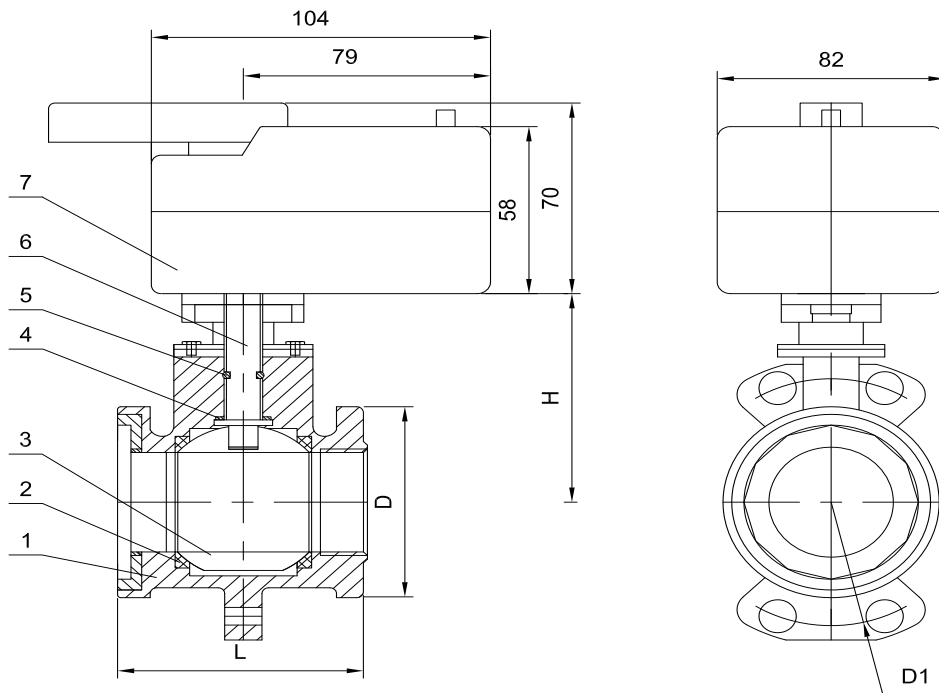
A Member of the AVK Group

DS920020021711

On/Off or modulating control DN65-80 available
Flanges and drilling to BS EN 1092-2

Component list

- | | | |
|---------|-----------|---------------------|
| 1. Body | 4. Stem | 7. Actuator housing |
| 2. Seat | 5. Gasket | |
| 3. Ball | 6. O-ring | |



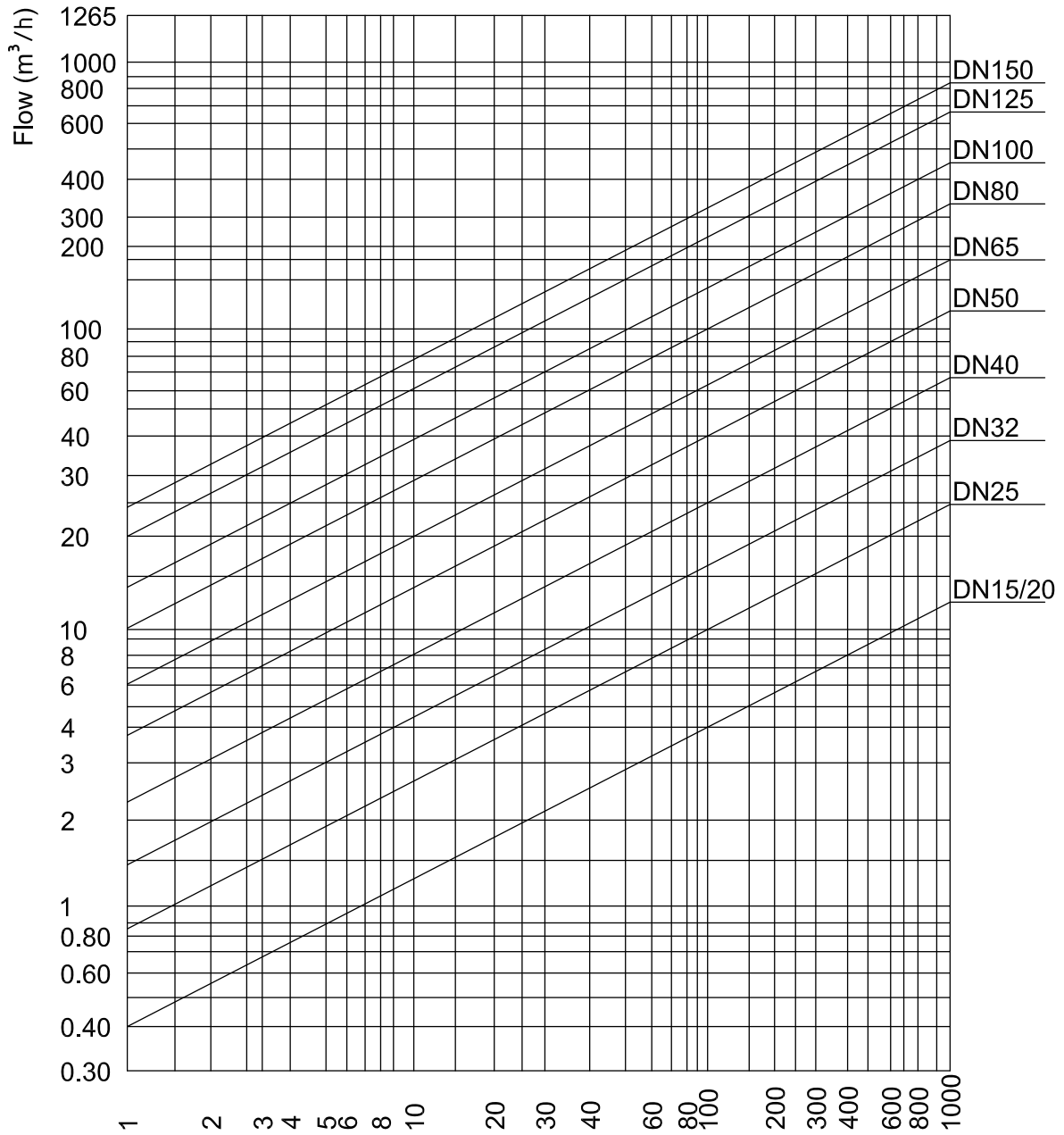
Ref.no.	DN	L mm	D mm	D1 mm	H mm	Kvs m ³ /h	Closing pressure Bar	Weight Kgs
920020065X01	65	97	105	145	136	63	4.5	4.9
920020080X01	80	108	125	160	140	100	4	7

X=1, Modulating type
X=3, On/Off type



On/Off or modulating control DN65-80 available
Flanges and drilling to BS EN 1092-2

Head loss chart



Remarks: Valve for water at 20°C (full open)

ΔP (KPa)

