



ICV electric control valve to the cold, hot water flow regulator. widely used in central air conditioning, heating, water treatment control system. And there are a variety of power and control signals for selection.

On/Off or modulating control (DN15-80) available  
Thread to BS 21

**Use:**

For water to max.95°C

**Tests:**

Hydraulic test to BS EN 12266

Seat: According to each aperture  
closure pressure difference.

Body: 1.5 x PN

**Marking:**

Body: DN, PN, flow direction.

Actuator: ICV logo, wiring diagram,  
voltage value.

**Materials**

Body	Brass H62
Stem	Stainless steel
Disc	Brass H62
Seat	Brass H62
Packing	PTFE+NBR

**Actuator materials**

Housing	ABS
Gear	POM,Nylon
Bracket	Die casting aluminium alloy

Power supply	24VAC,50/60HZ
Control signal	0~10V/2-10V/0-20mA/4-20mA
Feedback signal	0~10V/2-10V
Protection grade	IP54



DN15-50



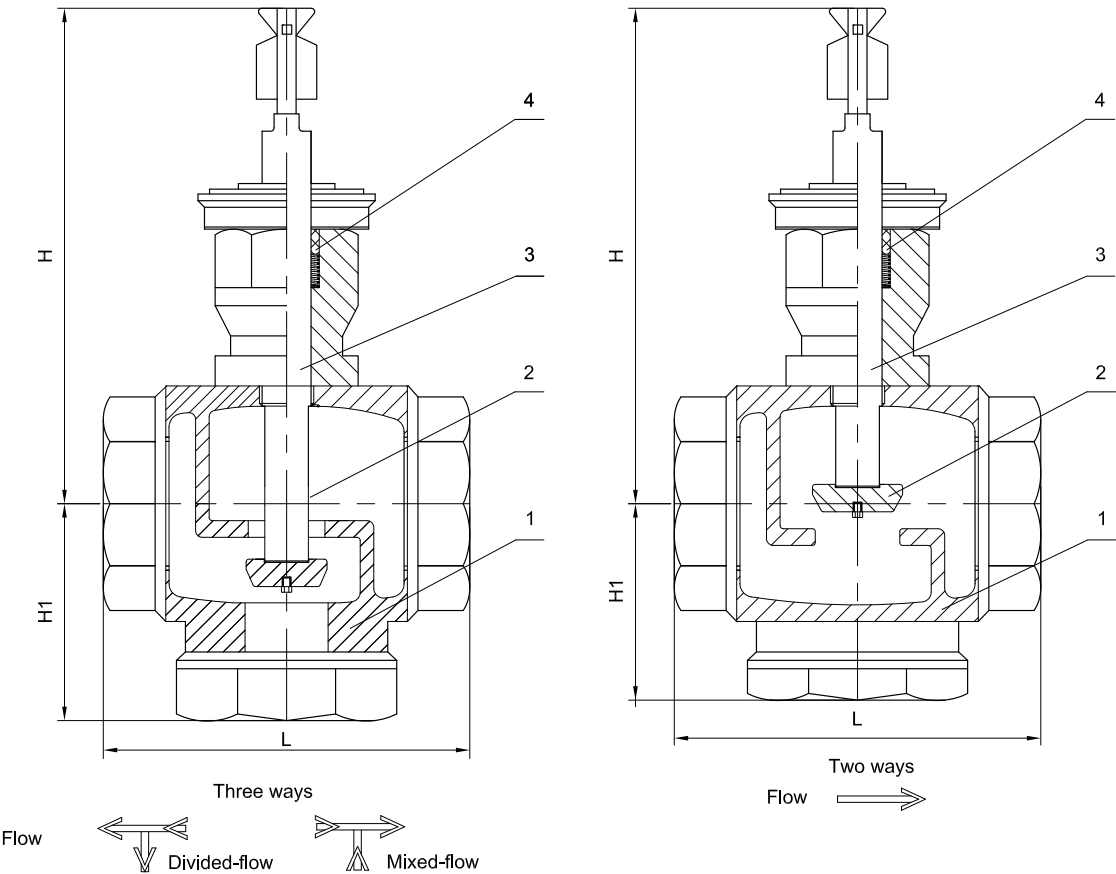
DN65-80



ICV electric control valve to the cold, hot water flow regulator. widely used in central air conditioning, heating, water treatment control system. And there are a variety of power and control signals for selection. On/Off or modulating control (DN15-80) available Thread to BS 21

Component list

1. Body
2. Disc
3. Stem
4. Packing

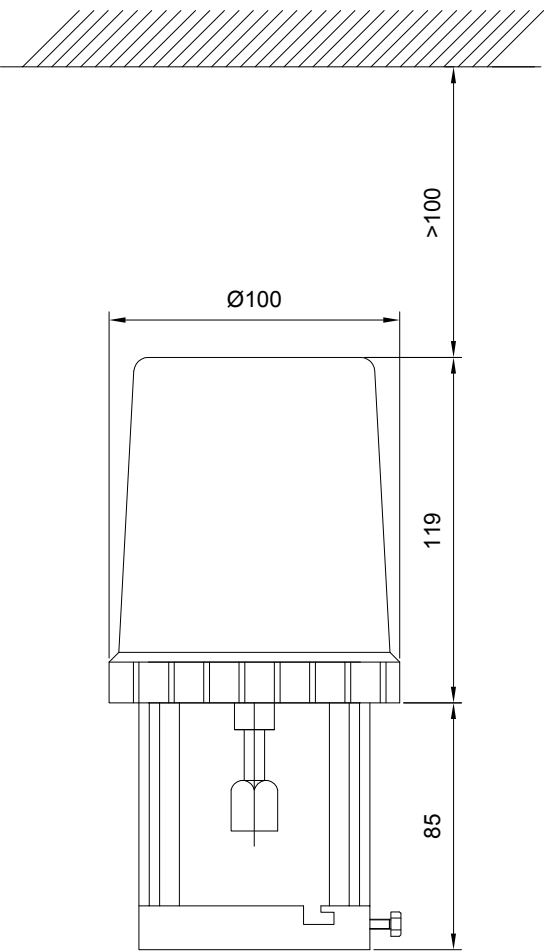


Ref.no.	DN	L	H	H1		Kvs	Stroke	Closing pressure	Weight		
		mm	mm	mm		m³/h		Mpa	Kgs		
				Two ways	Three ways					Two ways	Three ways
9200300151G	15	84	130	41	53	4	15	0.6	2.2		2.4
9200300201G	20	84	130	41	53	6.3	15	0.6	2.3		2.5
9200300251G	25	104	135.5	52.5	64.5	8	20	0.6	3.5		3.8
9200300321G	32	110	138	57.5	65.5	16	20	0.55	3.7		4.2
9200300401G	40	120	144.5	63	76	25	20	0.45	4.4		5.0
9200300501G	50	134	144.5	63	77.5	40	20	0.30	5.7		6.7
9200300651G	65	160	152.5	75	91	63	20	0.30	8.5		9.5
9200300801G	80	180	158.5	85	98.5	78	20	0.25	9.5		10.5

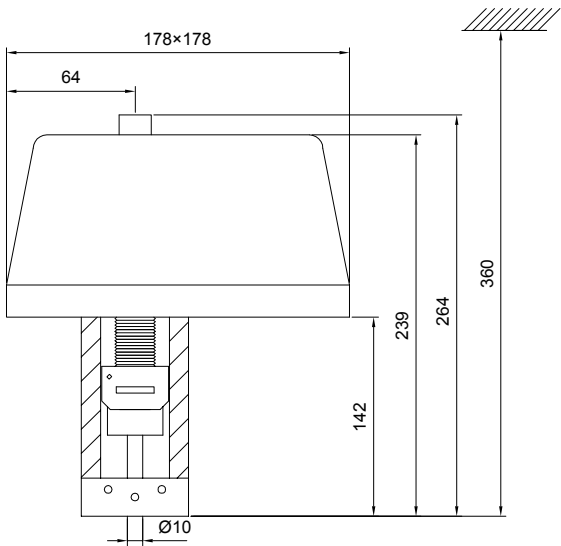
G=2, Two ways. G=3, Three ways.



ICV electric control valve to the cold, hot water flow regulator. widely used in central air conditioning, heating, water treatment control system. And there are a variety of power and control signals for selection. On/Off or modulating control (DN15-80) available  
Thread to BS 21



DN15-50



DN65-80

Actuator model		92003B0246	92003B0247
		DN15-50	DN65-80
Actuating force		600N	1200N
Runing time	50HZ	100S	114S
	60HZ	80S	95S

B=1, On/Off type; B=2, Modulating type.

