



To BS EN 593
Face to face dimension to EN 558 table 2 basic series 13
Flanges and drilling to BS EN 1092-2

Use:
For water to max. 90°C

Tests:
Hydraulic test to BS EN 1074-1
Seat: 1.1 x PN
Body: 1.5 x PN
Operating torque test

Optional extras:
Lever, worm gear and electric actuator.

DN50-150 c/w lever
DN200-1200 c/w worm gear

Materials
Body Ductile iron
Disc* DI with Epoxy coated
Stem* Stainless steel AISI 420
Seat* EPDM
Coating Epoxy coating RAL7011

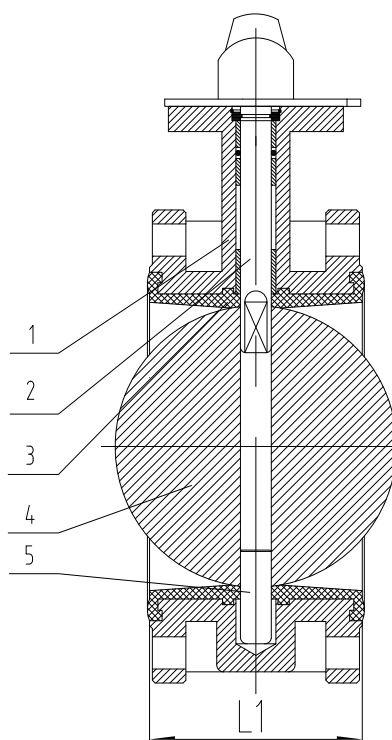
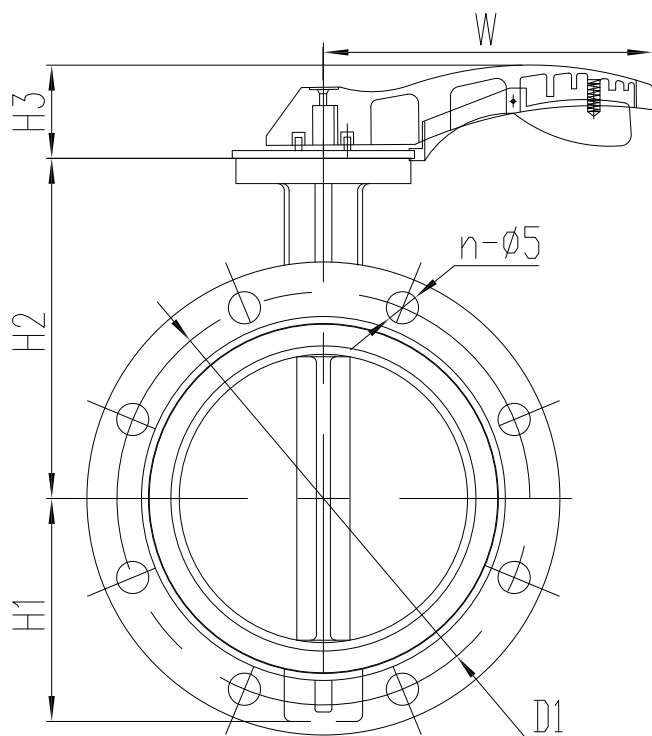
*Other material available on request (DN50-600 Ductile iron with nylon disc; Stainless steel disc. for water to max. 95°C).



To BS EN 593
 Face to face dimension to EN 558 table 2 basic series 13
 Flanges and drilling to BS EN 1092-2

Component list

- | | | |
|---------|---------|---------|
| 1. Body | 3. Seat | 5. Stem |
| 2. Stem | 4. Disc | |



Ref.no.	DN	L1 mm	H1 mm	H2 mm	H3 mm	W mm	D1 mm	N-Ø5	Weight Kgs
92503005011YY	50	108	62	130	70	175	125	4-Ø18	9
92503006511YY	65	112	73	145	70	175	145	4-Ø18	10
92503008011YY	80	114	85	155	70	175	160	8-Ø18	11
92503010011YY	100	127	102	170	75	200	180	8-Ø18	12
92503012511YY	125	140	116	190	80	260	210	8-Ø18	15
92503015011YY	150	140	130	210	80	260	240	8-Ø22	18

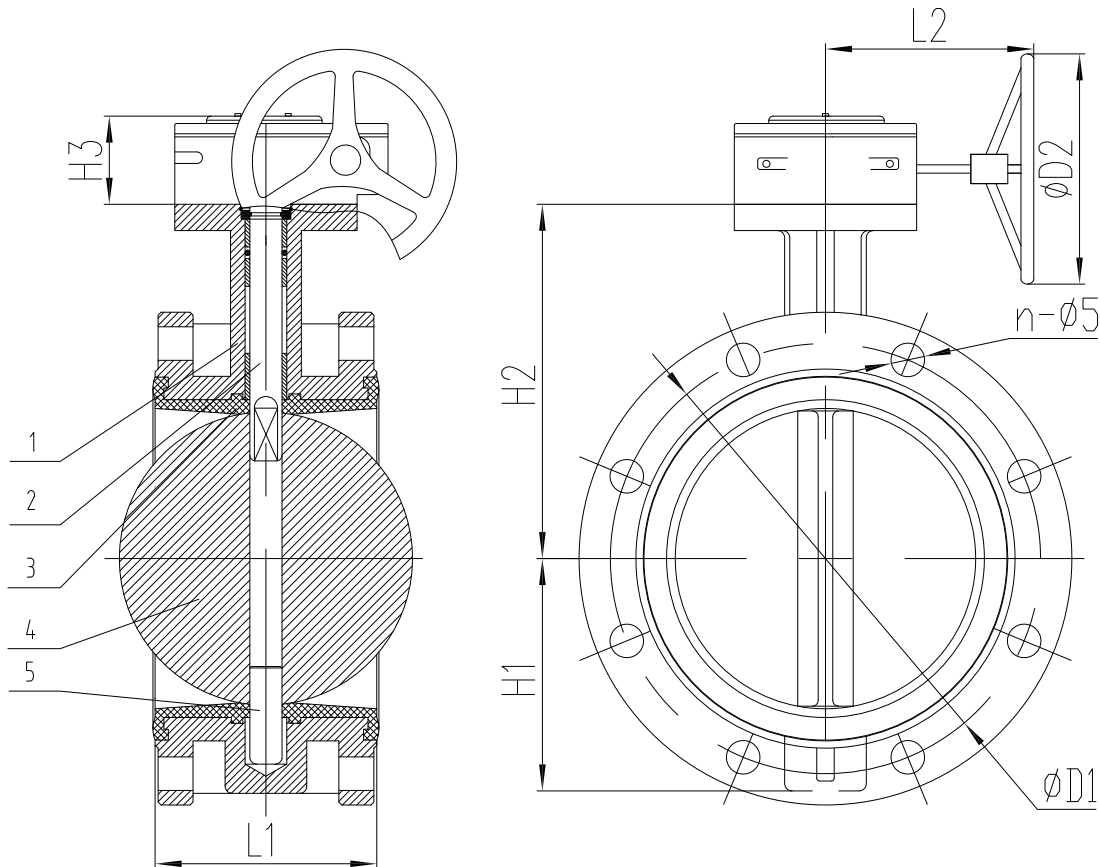
YY= Disc different material



To BS EN 593
 Face to face dimension to EN 558 table 2 basic series 13
 Flanges and drilling to BS EN 1092-2

Component list

- | | | |
|---------|---------|---------|
| 1. Body | 3. Seat | 5. Stem |
| 2. Stem | 4. Disc | |



Ref.no.	DN	L1 mm	H1 mm	H2 mm	H3 mm	L2 mm	D1 mm	D2 mm	n-Ø5	Weight Kgs
92503005011YY2	50	108	62	130	60	140	125	130	4-Ø18	12
92503006511YY2	65	112	73	145	60	140	145	130	4-Ø18	13
92503008011YY2	80	114	85	155	60	140	160	130	8-Ø18	14
92503010011YY2	100	127	102	170	60	140	180	130	8-Ø18	18
92503012511YY2	125	140	116	190	60	140	210	170	8-Ø18	25
92503015011YY2	150	140	130	210	60	140	240	170	8-Ø22	30
92503020011YY	200	152	160	243	70	195	295	220	12-Ø22	44
92503025011YY	250	165	193	282	70	195	355	220	12-Ø26	57
92503030011YY	300	178	230	310	80	230	410	280	12-Ø26	63
92503035011YY	350	190	256	345	80	230	470	280	16-Ø26	88
92503040011YY	400	216	283	377	127	275	525	388	16-Ø30	140
92503045011YY	450	222	317	375	130	280	585	382	20-Ø30	160

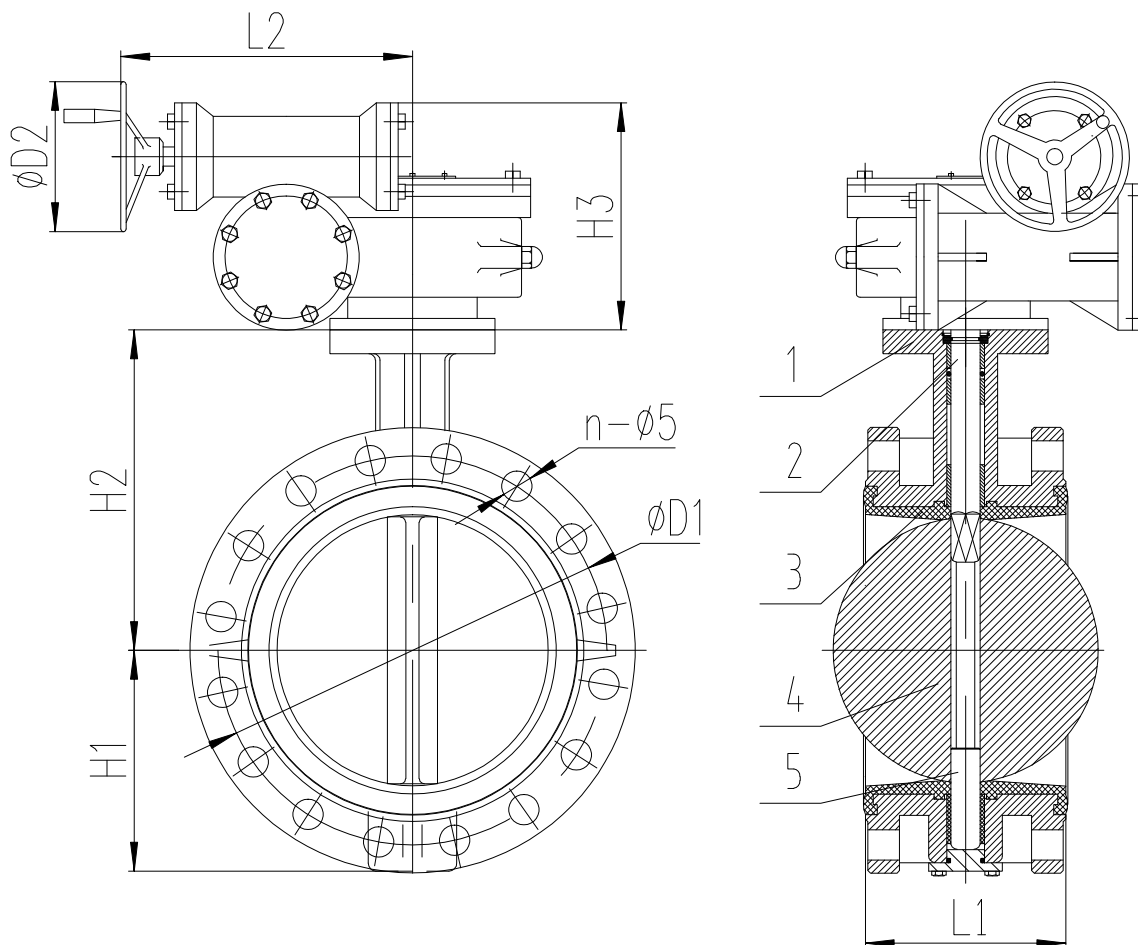
YY= Disc different material



To BS EN 593
 Face to face dimension to EN 558 table 2 basic series 13
 Flanges and drilling to BS EN 1092-2

Component list

- | | | |
|---------|---------|---------|
| 1. Body | 3. Seat | 5. Stem |
| 2. Stem | 4. Disc | |



Ref.no.	DN	L1	H1	H2	H3	L2	D1	D2	n-ø5	Weight
		mm	mm	mm	mm	mm	mm	mm		Kgs
92503050011YY	500	229	355	430	125	255	650	300	20-ø33	195
92503060011YY	600	267	410	500	130	280	770	300	20-ø36	295
92503070011YY	700	292	480	560	239	336	840	384	24-ø36	380
92503080011YY	800	318	530	620	239	336	950	384	24-ø39	500
92503090011YY	900	330	605	685	240	357	1050	420	28-ø39	741
92503100011YY	1000	410	670	735	240	357	1170	420	28-ø42	993
92503120011YY	1200	470	780	917	300	468	1390	420	32-ø48	1610

YY= Disc different material

